

Charlotte County 2013

1 Population¹ 163,679

2 MSW Management (tons)²

A. Landfilled	182,907
B. Combusted	0
C. Recycled	127,882
D. Stockpiled	0
E. Total	310,789

E. Total Pounds per Capita Per Day 10.40

3 MSW Collected & Recycled

	Collected (tons)	Recycled (%)
A. Minimum 4 of 8³		
Newspaper	10,082	69%
Glass	6,931	43%
Aluminum Cans	2,205	12%
Plastic Bottles	2,836	3%
Steel Cans	2,520	1%
Cardboard	15,438	67%
Office Paper	2,205	1%
Yard Trash	39,951	87%

B. Other Recyclables

Other Plastics	13,232	8%
Ferrous Metals	14,178	79%
White Goods	2,205	5%
Non-ferrous Metals	1,890	51%
Other Paper	19,849	2%
Textiles	5,711	7%
C&D Debris	84,434	65%
Food	15,123	2%
Miscellaneous	69,163	4%
Tires	2,836	13%
Processed Fuel	N/A	0%

C. Traditional Recycling Rate (%)

1) Unadjusted	41%
2) Adjusted	41%

D. Renewable Energy Recycling Credits

	Mwh	Recycling Credit (%)
1) Waste-to-Energy	0	0.00%
2) Landfill Gas	10,783	3.47%
3) Renewable Energy (other than WTE)	0	0.00%

E. Yard Trash Disposed in a Landfill Beneficially Using Landfill Gas (for something other than electricity)

	Mwh	Recycling Credit (%)
	0	0.0000%

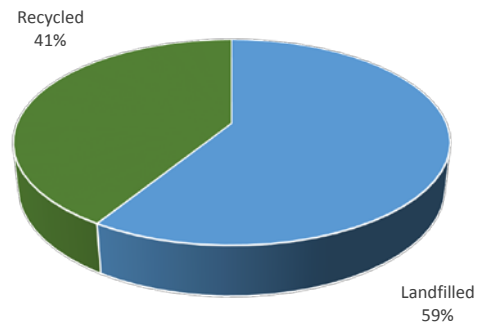
F. Overall Recycling Rate (%)

1) Unadjusted	45%
2) Adjusted	45%

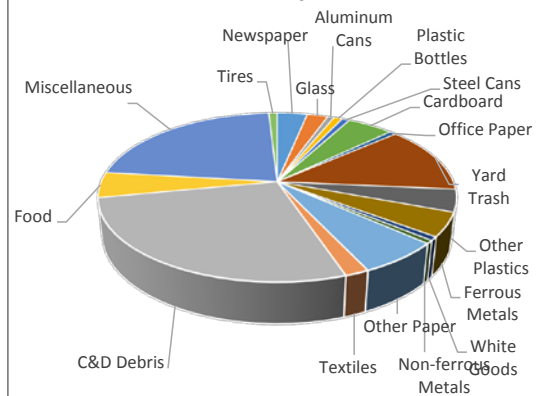
G. Participation in Recycling

	Units	Percent
1) Single Family Curbside	72,962	75%
2) Multi-Family Curbside	14,941	75%
3) Commercial		
a) Scheduled Collection	5,247	38%
b) On Call Collection	0	0%

MSW Management



MSW Composition



Summary of Recycling Credits

