

## Martin County 2015

**1 Population** 150,062

### 2 MSW Management (tons)

A. Landfilled	118,600
B. Combusted	119
C. Recycled	161,793
D. Stockpiled	0
E. Total	280,512

E. Total Pounds per Capita Per Day 10.24

### 3 MSW Collected & Recycled

A. Minimum 4 of 8	Collected (tons)	Recycled (%)
Newspaper	10,313	46%
Glass	9,708	56%
Aluminum Cans	1,225	41%
Plastic Bottles	3,086	42%
Steel Cans	2,707	27%
Cardboard	20,291	50%
Office Paper	3,584	49%
Yard Trash	77,601	6%

#### B. Other Recyclables

Other Plastics	10,720	11%
Ferrous Metals	17,109	93%
White Goods	2,719	91%
Non-ferrous Metals	1,224	58%
Other Paper	20,429	36%
Textiles	3,284	6%
C&D Debris	55,394	40%
Food	38,088	38%
Miscellaneous	2,680	41%
Tires	350	51%
Processed Fuel	N/A	100%

#### C. Traditional Recycling Rate (%)

1) Unadjusted	58%
2) Adjusted	58%

#### D. Renewable Energy Recycling Credits

	Mwh	Recycling Credit (%)
1) Waste-to-Energy	79	0.03%
2) Landfill Gas	0	0.00%
3) Renewable Energy (other than WTE)	0	0.00%

#### E. Yard Trash Disposed in a Landfill Beneficially Using Landfill Gas (for something other than electricity)

	Mwh	Recycling Credit (%)
	0	0.0000%

#### F. Overall Recycling Rate (%)

1) Unadjusted	58%
2) Adjusted	58%

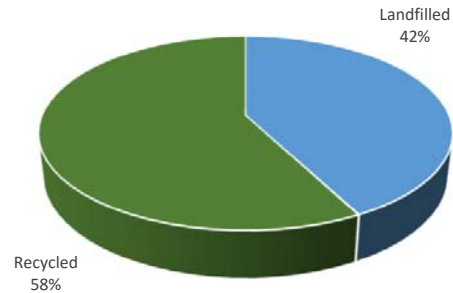
#### G. Participation in Recycling

	Units <sup>1</sup>	Percent <sup>2</sup>
1) Single Family Curbside	54,244	56%
2) Multi-Family Curbside	21,602	46%
3) Commercial		
a) Scheduled Collection	2,496	34%
b) On Call Collection	0	0%

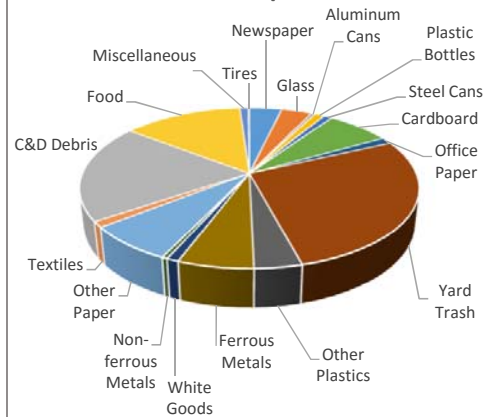
<sup>1</sup>Represents the number of units with curbside service available.

<sup>2</sup>Represents the percent participation of units with service available.

### MSW Management



### MSW Composition



### Summary of Recycling Credits

