

Union County 2016

1 Population 15,887

2 MSW Management (tons)

A. Landfilled	8,441
B. Combusted	0
C. Recycled	835
D. Stockpiled	0
E. Total	9,276

E. Total Pounds per Capita Per Day 3.20

3 MSW Collected & Recycled

	Collected (tons)	Recycled (%)
A. Minimum 4 of 8		
Newspaper	334	0%
Glass	445	0%
Aluminum Cans	92	0%
Plastic Bottles	260	0%
Steel Cans	148	0%
Cardboard	538	0%
Office Paper	213	0%
Yard Trash	1,178	56%

B. Other Recyclables

Other Plastics	835	0%
Ferrous Metals	269	19%
White Goods	204	0%
Non-ferrous Metals	65	2%
Other Paper	1,150	0%
Textiles	306	0%
C&D Debris	1,242	6%
Food	1,020	0%
Miscellaneous	717	0%
Tires	260	19%
Processed Fuel	N/A	0%

C. Traditional Recycling Rate (%)

1) Unadjusted	9%
2) Adjusted	9%

D. Renewable Energy Recycling Credits

	Mwh	Recycling Credit (%)
1) Waste-to-Energy	0	0.00%
2) Landfill Gas	0	0.00%
3) Renewable Energy (other than WTE)	0	0.00%

E. Yard Trash Disposed in a Landfill Beneficially Using Landfill Gas (for something other than electricity)

Mwh	Recycling Credit (%)
0	0.0000%

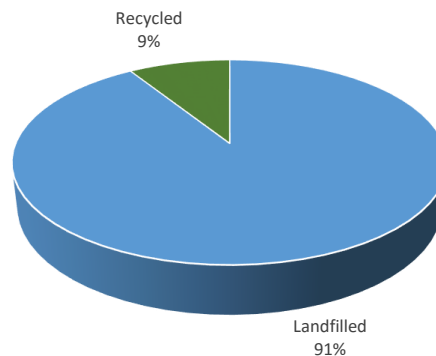
F. Overall Recycling Rate (%)

1) Unadjusted	9%
2) Adjusted	9%

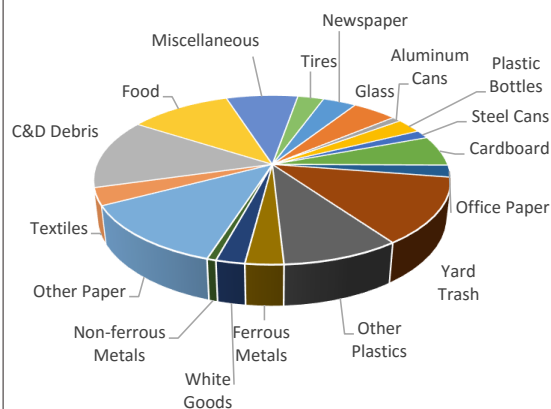
G. Participation in Recycling

	Units ¹	Percent ²
1) Single Family Curbside	0	0%
2) Multi-Family Curbside	0	0%
3) Commercial		
a) Scheduled Collection	0	0%
b) On Call Collection	300	10%

MSW Management



MSW Composition



Summary of Recycling Credits

