



*fighting hunger.
feeding hope.*

www.FeedHopeNow.org

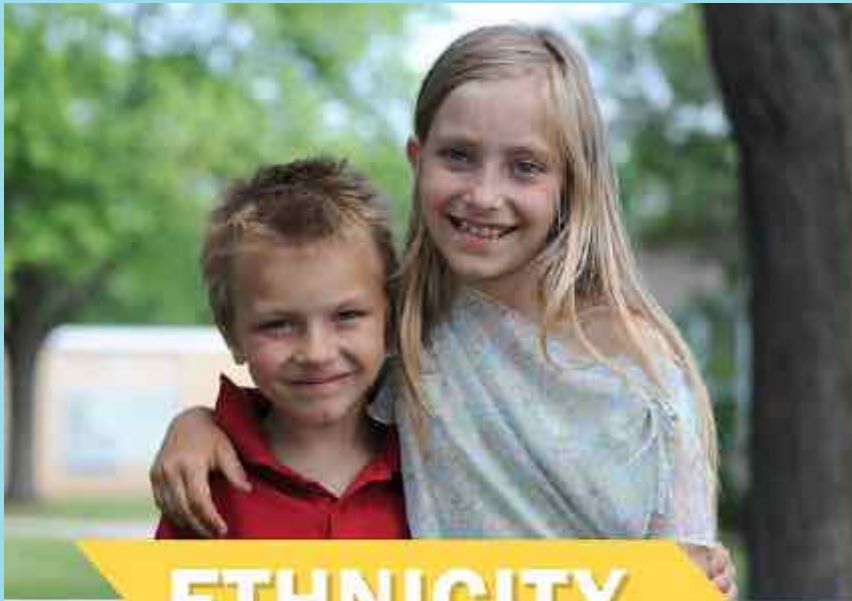


Who is hungry in Central Florida?

- Hunger affects:
 - Children in low-income families
 - Underemployed individuals and families (the “working poor”)
 - Seniors who are living on fixed incomes
 - People who are sick or disabled

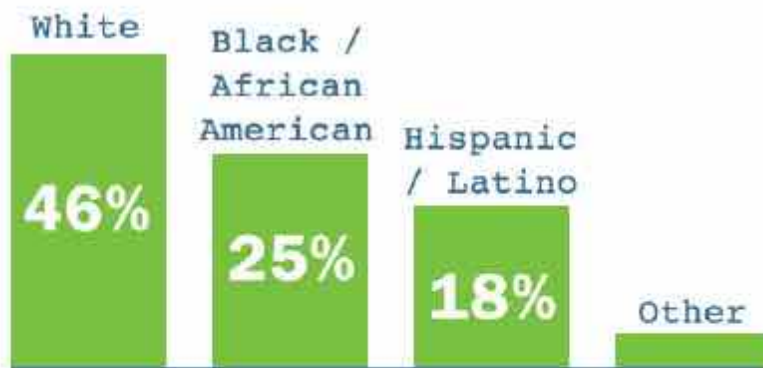


Who is hungry in Central Florida?



THE FACE OF HUNGER IN CENTRAL FLORIDA WHO IS HUNGRY?

ETHNICITY



HOW CLIENTS IDENTIFY THEMSELVES

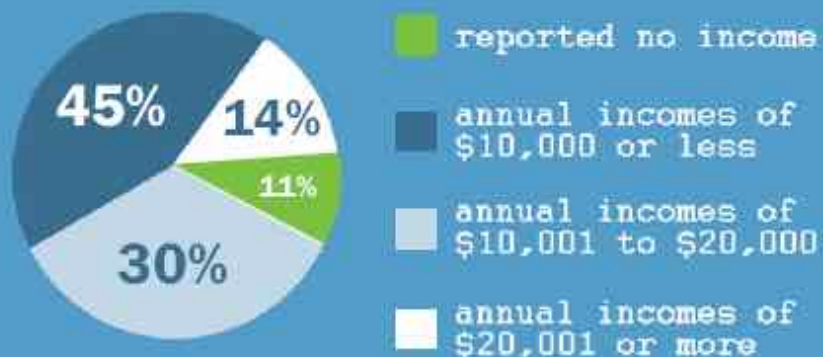
Among all clients, 27% are children under the age of 18, and 11% are seniors age 65 and older.

Who is hungry in Central Florida?

FINANCIAL SITUATIONS

60% of households have a household member who had worked for pay in the last 12 months.

74% of client households have incomes that fall at or below the Federal poverty level.



63% of client households currently receive benefits through the Supplemental Nutrition Assistance Program (SNAP, formerly known as the Food Stamp program).

Who is hungry in Central Florida?

THE COST OF HUNGER IN CENTRAL FLORIDA

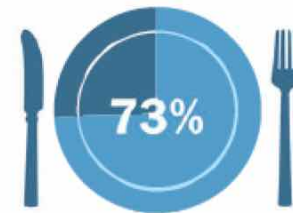


TOUGH CHOICES



70% of households had to choose between paying for food and paying for rent/mortgage at least once in the past 12 months.

73% of households reported having to choose between paying for food and utilities within the past 12 months.



73% of households reported having to choose between paying for food or transportation.

77% reported having to use unconventional means for getting enough food in the past 12 months.



Who is hungry in Central Florida?

EDUCATION



OF ALL CLIENTS HAVE ATTAINED A HIGH SCHOOL DEGREE OR A GENERAL EQUIVALENCY DIPLOMA (GED).



OF ALL CLIENTS HAVE SOME POST-HIGH-SCHOOL EDUCATION (INCLUDING LICENSING/CERTIFICATION, SOME COLLEGE, OR A FOUR YEAR DEGREE).

HOUSING



88% of food assistance client households reside in non-temporary housing, such as a house or an apartment.



12% reside in temporary housing, such as a shelter or mission, motel or hotel, or on the street/in wooded areas.



17% OF RESPONDENTS EXPERIENCED A FORECLOSURE OR EVICTION IN THE PAST FIVE YEARS.

Who We Are

- The leader of hunger relief efforts in Central Florida – providing more than 44 million meals in 2014-2015.



- A member of Feeding America – the leading domestic hunger-relief charity in the United States.



What We Do

- Distribute food and grocery products to approximately 550 feeding agencies throughout Central Florida, including:
 - Food Pantries
 - Soup Kitchens
 - Women's Shelters
 - Senior Centers
 - Day Care Centers
 - Kids Cafés
- Serve Orange, Seminole, Osceola, Lake, Brevard and Volusia Counties



Where Does The Food Come From?

- 70% comes from companies within the food industry: manufacturers, wholesalers, packagers, retailers, etc.
 - Test marketed item
 - Discolored
 - Approaching a freshness date
 - Dented items
 - Make room for new product
 - Any rhyme or reason!
- 20% comes from USDA Commodities program
- 10% comes off the shelves of our neighbors in the form of food drives

1000s of Hungry Central Floridians



Donors



Food Bank Pick-up

FLOW OF FOOD AT SECOND HARVEST FOOD BANK



500+ Partner Agencies



Warehouse



Annual ROI of 1,375%





The Impact

- Food Distribution is up 26%
 - Total distribution since moving in to the new facility has been over 150 million meals.
- Fruit and vegetable distribution is up 30%
 - Over 15 million pounds of produce was distributed in FY 15/16.



Benefits to Food Industry Partners



Consolidated Appropriations Act, 2016
2016 Changes to Food Donation Tax Incentives

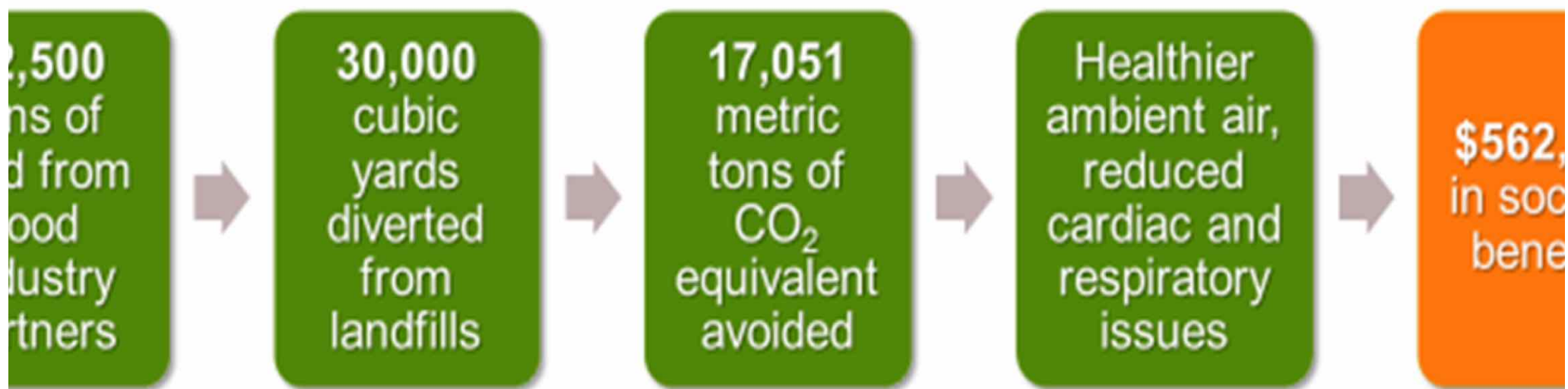
\$135MM

\$14MM

\$19MM

\$2MM

Environmental Impact



Production Model (WARM) | US Environmental Protection Agency

\$135MM

\$14MM

\$19MM

\$2MM

\$5MM

Second Harvest
FOOD BANK
OF CENTRAL FLORIDA

RO
CRUMME
SCHOOL





Efficiency

- Our cost to distribute one pound of food has been reduced by 60%
- New Technology is resulting in increased benefits in terms of cost and time savings:
 - Bar code scanning of inventory results in faster and more accurate tracking.
 - Our inventory is “real time” and available to Partner Agencies for on-line ordering resulting in enhanced service and convenience.
 - Our fleet of 19 trucks and the GPS Routing System is cutting our annual mileage by over 40,000 miles. Every diesel dollar saved equates into more food being distributed.

Our Programs

- Benefits Connection
- Bites, Camera, Action
- Community Kitchen
- Culinary Training Program
- Disaster Relief
- Grocery Alliance
- Hi-Five Kids Packs
- Kids Café
- Mobile Food Drop
- Nutrition
- Power Purchase
- Second Helpings
- Summer Food Service
- USDA Commodities
- Meals for Good

Together we can and
will create a hunger free
Central Florida.

For more information,
call 407-295-1066 or visit
www.FeedHopeNow.org

